



Beneteau Anode Nut Installation

STEP 1



Shown: Beneteau Zinc Propeller Anode, Brass Nut and Locking Washer

STEP 2



Install Beneteau Locking Washer with the tab into the propeller hub.

STEP 3

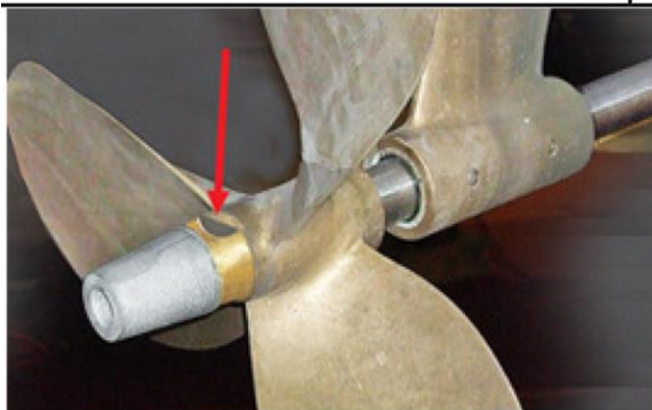


Thread Brass Nut onto Propeller Shaft.

STEP 4



Once the Brass Nut is tightened onto the propeller shaft, bend up the tabs on the locking ring to secure the Brass Nut.



STEP 5

A Zinc Anode is installed over the Brass Nut. The tab on the locking ring is bent up over Brass Nut, locking it in place. Check red arrow.